

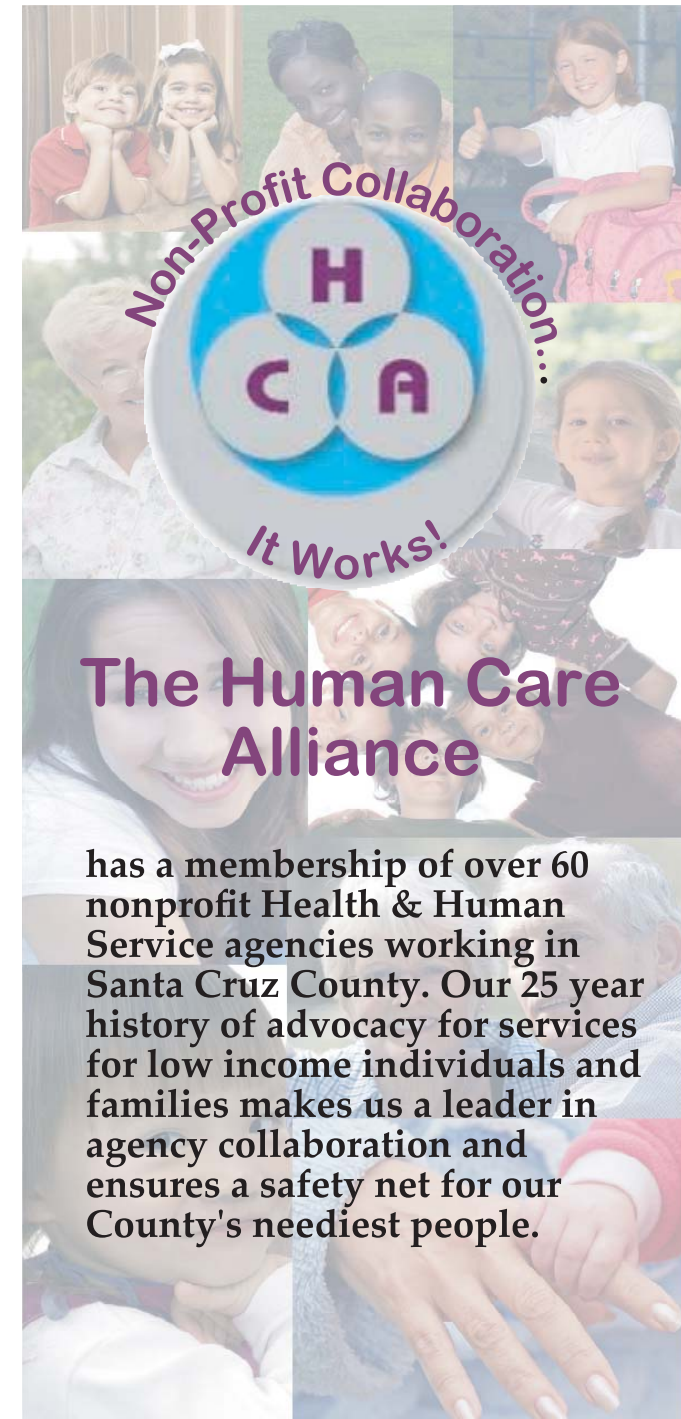


Our Mission

- Educate the public and advocate for human care services
- Ensure effective, efficient services by promoting diversity, communication, collaboration and mutual assistance
- Maintain service through collaborative cultivation of public and private funding and support

Partners for a Healthy Community

For more information please contact us at hca@cruzio.com or visit us on the web at www.humanalliance.org



Partners for the Community

Irma is the perfect example of successful collaboration. Her 13-year-old daughter's rare wasting disease requires her parents' attention literally 24 hours a day since the child is confined to a wheelchair and is in danger of suffocating at any time. Based upon a referral from an HCA member agency providing in-home support for her daughter, Irma enrolled in another agency's literacy program.

When we asked Irma why she wanted to learn English she said, "I need to be able to speak to the doctors. I need English to keep my daughter alive."

Almost every resident of Santa Cruz has a neighbor, friend or family member who has been helped by an HCA agency. Perhaps it was a family needing child care or a senior trying to stay in their home; maybe it was someone needing a little help with dental or medical care; possibly it was a parent struggling to learn to read or a young person needing a place to go after school.

For over 20 years local governments have relied upon the Human Care Alliance to help them respond to the changing needs in our community and to provide services in an efficient, cost effective manner. HCA member agencies work closely with local governments to develop strategies to serve our community and to maximize the state, federal and foundation funds brought into our county.



HCA Member Partners

Above the Line
Advocacy, Inc
Big Brothers Big Sisters
Boys & Girls Club of Santa Cruz
Cabrillo Stroke Center
California Grey Bears
California Rural Legal Assistance
Central Coast Center for Independent Living
Child Development Resource Center
Children's Center of San Lorenzo Valley
Community Action Board
Community Bridges
Community Children's Center
Conflict Resolution Center
Court Appointed Special Advocates
Diabetes Health Center
Dientes
Diversity Center
Emeline Child Care Center
Familia Center
Families in Transition
Family Services Agency of the Central Coast
Front Street Housing Inc.
Glen Arbor School
Homeless Services Center
Homeless Garden Project
Hospice Caring Project
Janus of Santa Cruz
Mental Health Client Action Network

Mid-County Children's Center
Mountain Community Resources
Neighborhood Child Care Center
New Life Community Center
O'Neill Sea Odyssey
Pajaro Valley Children's Center
Pajaro Valley Shelter Services
Parents Center
Planned Parenthood, Mar Monte
Santa Cruz AIDS Project
Santa Cruz Community Counseling Center
Santa Cruz Community Ventures
Santa Cruz Child Abuse Prevention Council
Santa Cruz Hillel
Santa Cruz Toddler Care Center
Second Harvest Food Bank
Senior Citizens Legal Services
Senior Network Services
Seniors Council
San Lorenzo Valley Senior Center
Shared Adventures
Survivors Healing Center
Vista Center Santa Cruz
Volunteer Centers of Santa Cruz
Walnut Ave. Women's Center
Watsonville YMCA
WomenCARE
Women's Crisis Support/Defensa de Mujeres
YWCA Watsonville

HCA-The Safety Net for Our Community